

韩国 "诺亚" SA 系列电动执行机构

CHINA AGENT (中国总代理商)

SHENZHEN DEMEISEN SCIENCE & TECHNOLOGY CO., LTD. (深圳市德美森科技有限公司)

TEL (电话) : +86-755- 26471606, 33641458

FAX (传真) : +86-755-26471605

MOBILE PHONE (手机) : +86-18922811428, 13058157851

POST CODE (邮编) : 518054

EMAIL (电子邮件) : demeisen@126.com

MSN: demeisen@hotmail.com

WEBSITE (网址) : <http://www.demeisen.com>

QQ: 815856291

TEL (电话) : +86-755- 26471606, 33641458

FAX (传真) : +86-755-26471605

WEBSITE (网址) : <http://www.demeisen.com>

EMAIL: demeisen@126.com

作为一种角行程机构,"诺亚"系列电动执行机构适合于管道,排污及诸如垃圾处理,纸浆,造纸,造船领域使用的球阀,蝶阀,旋塞阀及风门等的配套工程。其紧凑,简洁的设计使它即使安装在危险作业环境中,也能保证其高可靠性和品质。“诺亚”SA 系列电动执行机构还能在输出转矩 20Nm~50Nm 范围内提供最合理的解决方案。

- Designed for small quarter-turn applications. This actuator can also automate valves requiring up to 360-degrees rotation
- Engineered to be lightweight and compact for greater versatility.
- The unique housing design allows various options to be installed without the additional cost of an external enclosure.
- 4-LED lights are located inside the high impact dome indicator. When the actuator reaches the full open or full close position, the dome lights will illuminate and allow added visibility over a greater distance or in low light areas.
- To help protect the components and extend the actuator's life, a 2-watt anti-condensation heater is included as standard.
- Included with the end of travel motor switches are two additional dry-contacts for auxiliary indication.
- A thermal protector is provided to protect the motor from over heating.
- The worm gear drive eliminates the possibility of back drive and the need for motor brakes
- Designed for mounting in any orientation.
- In case of a power loss, the manual over-ride is provided for positioning the valve.
- 3 ISO mounting pads are provided for greater flexibility.



SA-05

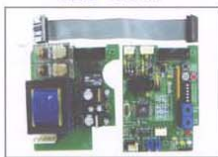
SA-05L

PERFORMANCE

MODEL	OUTPUT TORQUE		OPERATING TIME(90°)		MOTOR CLASS(E)	RATED CURRENT(mA)				DUTY CYCLE S2(%)	NUMBER OF HANDLE TURNS	WEIGHT Kg
	Kg.m	N.m	60Hz	50Hz		1 PHASE(AC)						
						24V	110V	230V	24V			
SA-05	5	50	14	17	6	1.8	0.35	0.23	1.8	75	6	2.8
SA-05L	5	50	14	17	6	1.8	0.35	0.23	1.8	75	6	3.2



LED LIGHT



P.C.U

OPTION

		SA-05	SA-05L
P.I.U	Potentiometer Unit(1k-Ohm)	●	●
C.P.T	Current Position Transmitter Output DC 4-20mA		●
P.C.U	Proportional control Unit Input:DC 4-20mA, 2-10V Output:DC 4-20mA		●
L.C.U	Local Control Unit		●

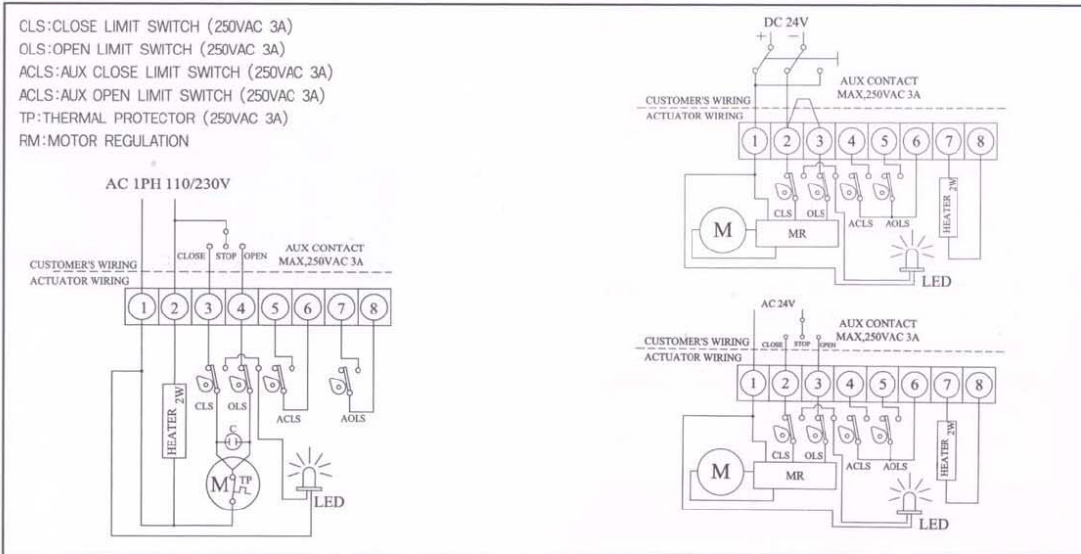


我公司可为客户定制 诺亚 SA 系列电动球阀: 1.球阀材料: 铸铁, 碳钢, 304 不锈钢, 316L 不锈钢, 铬钼钢, 2520 不锈钢, UPVC,青铜合金, 衬四氟等; 2.阀座密封: 可选软密封和硬密封, 衬四氟, 特殊合金等; 3. 连接方式可选: 螺纹连接, 法兰连接, 端面焊接; 4.执行器工作电源: 直流 DC24V, 交流单相 AC 110V, 交流单相 AC 220V,交流三相 AC 3800V; 5.可配套开关球阀, 调节球阀, 调节 V 型球阀; 6.阀门压力: 200MPa~0.1MPa,温度: -270℃~+600℃; 7.根据使用环境可配套成防水型和反隔爆型; 8.特殊配置敬请客户来电和传真及电子邮件说明, 我司竭诚为您服务。

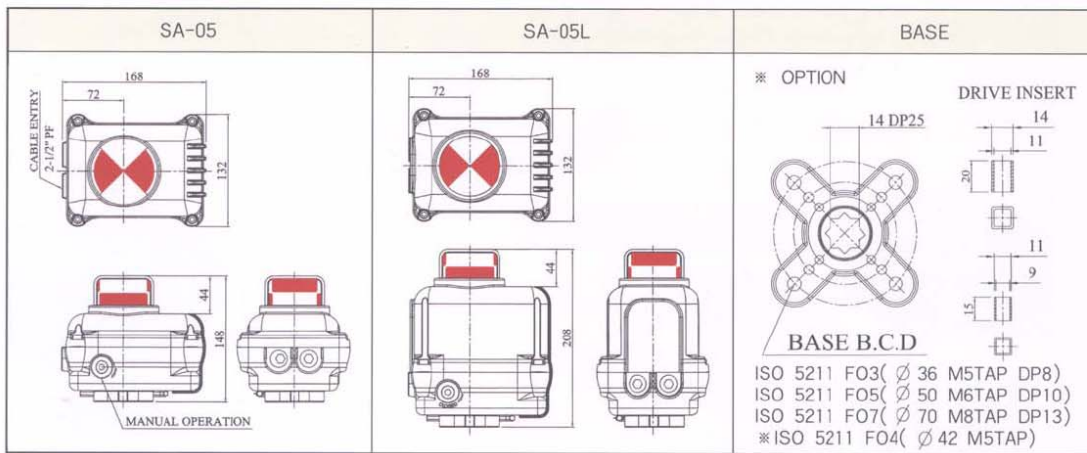
STANDARD SPECIFICATION

Indicator	Dome type(LED light inside)	Enclosure	Weatherproof enclosure IP68 Nema 4and6
Ambient temperature	-20°C to 70°C	Power supply	AC 110/230V 1 PH ±10% 50/60Hz, DC 24V(AC24V)
Limit switches	2 Open/Close + Dry contact2 Open/ close	Travel angle	90° ±5° (extension:upto 360°)
Manual operation	By L-wrench(6mm hexagon)	Self locking	Provided by means of worm gearing
Space heater	2W(110/230VAC,24VDC)	Conduit entries	Tow PF1/2" (option:PG13.5, NPT1/2")
Lubrication	Grease moly(EP type)	Materials	Steel,aluminium alloy, bronze
Surface Treatment	Anodizing	External coating	polyester(TGIC-free)

STANDARD WIRING



DIMENSION



我公司可为客户定制 诺亚 SA 系列电动蝶阀: 1.蝶阀材料: 铸铁, 碳钢, 304 不锈钢, 316L 不锈钢, 铬钼钢, 2520 不锈钢, UPVC, 青铜合金, 衬四氟等; 2.阀座密封: 可选软密封和硬密封, NBR 橡胶, EPDM 橡胶, 衬四氟, 特殊合金等; 3.连接方式可选: 螺纹连接, 法兰连接, 端面焊接; 4.执行器工作电源: 直流 DC24V, 交流单相 AC 110V, 交流单相 AC 220V, 交流三相 AC 3800V; 5.可配套开关球阀, 调节球阀, 调节 V 型球阀; 6.阀门压力: 200MPa~0.1MPa, 温度: -270°C~+600°C; 7.根据使用环境可配套成防水型和反隔爆型; 8.特殊配置敬请客户来电和传真及电子邮件说明, 我司竭诚为您服务。

