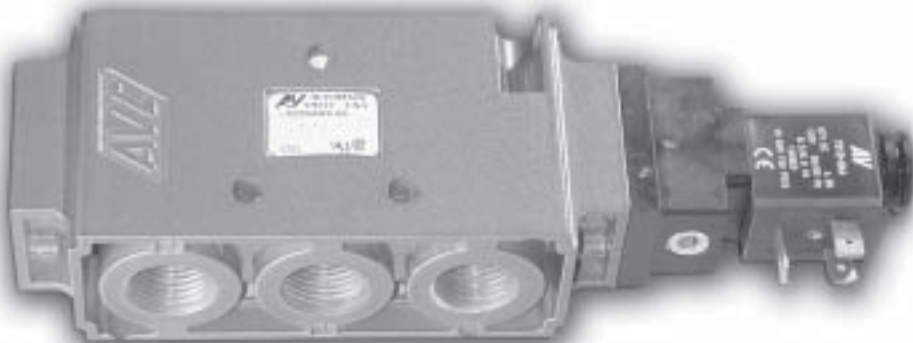
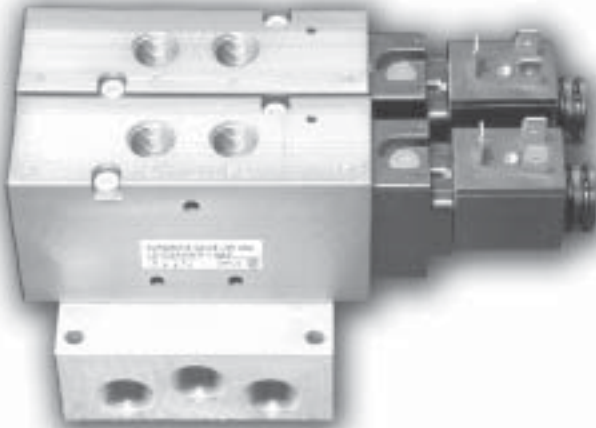
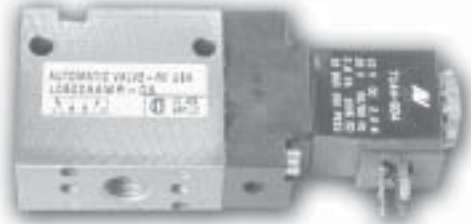
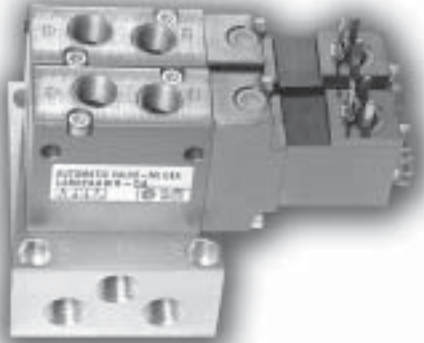
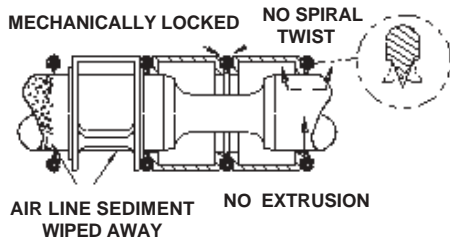


ISO 9001
AV **AUTOMATIC**
VALVE



TOP MOUNT SPOOL VALVES

DESIGN FEATURES



VALVES

- Balanced spool construction allows ports to be plugged for 2 or 3 way function, or restricted for inexpensive cylinder exhaust speed control. For selector or dual pressure applications, consult Factory.
- Manifold or line mount - flexible, efficient.
- Solid manifold construction for rugged, reliable performance.
- Specific application needs? Consult the Factory. We will build it for you.

TAPERED TEE-SEAL - L21, L45 Eats Dirt

- Bi-directional tapered Tee-Seal flexes to clean spool. Eliminates Monday morning sticking problems.
- Tested tough and proven reliable according to SAE specifications: Rust and water injected every 864,000 cycles for 20 million cycles.

SOLENOID ... Guaranteed Against Burnout

- Three-way pilot uses full air line pressure to shift the valve.
- Pilot is internally supplied when the pressure at port one is 35 to 150 PSIG (240 to 1030 kPa).
- Coil is hermetically sealed as an integral watertight molded unit.
- Push non-locking override. (Extended turn and turn lock available).

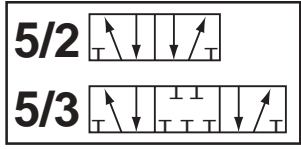
PRODUCTS CERTIFIED TO INCLUDE

- CSA - (C22.2)
- UL - (STD 429)
- ATEX - (2018x)
- PTB - (EEExmIIT5) (EEExialICT6)
- CE - (73/23/EEC), (89/336/EEC)

INDEX

	Page
Design Features	C2
Specifications	C3
Model Number Chart	C3
Standard Models	C4
Dimensional Information	C5
Air Pilot Models	C6
Dimensional Information	C7
Manual Models	C8-C9
Dimensional Information	C10
Manifolds	C11
Dimensional Information	C12
Accessories	C13
Options	C14
Electrical Information	C15
Service Information	C16

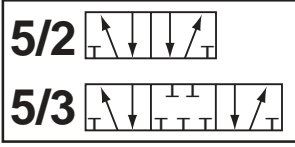
SPECIFICATIONS



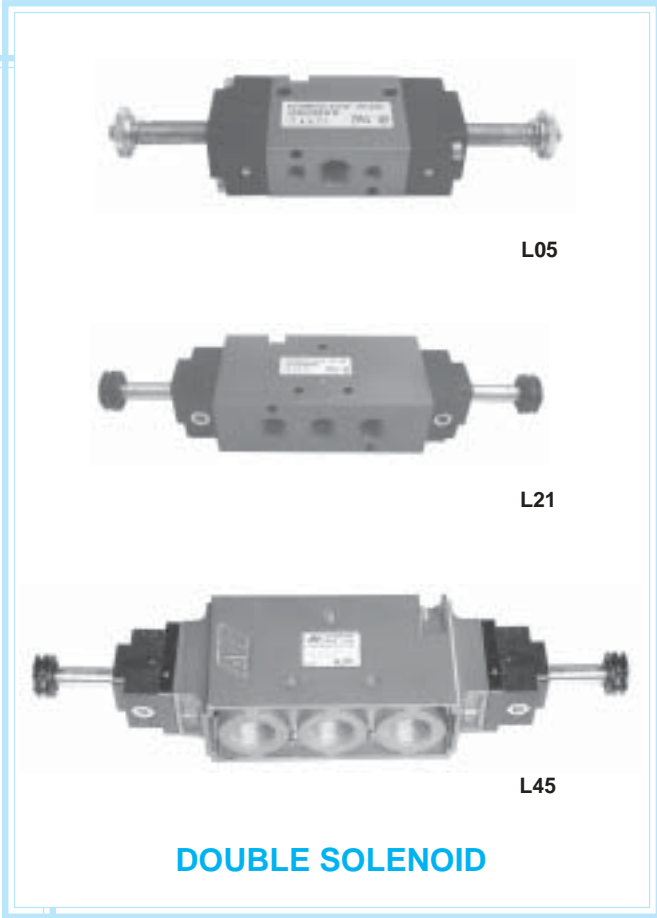
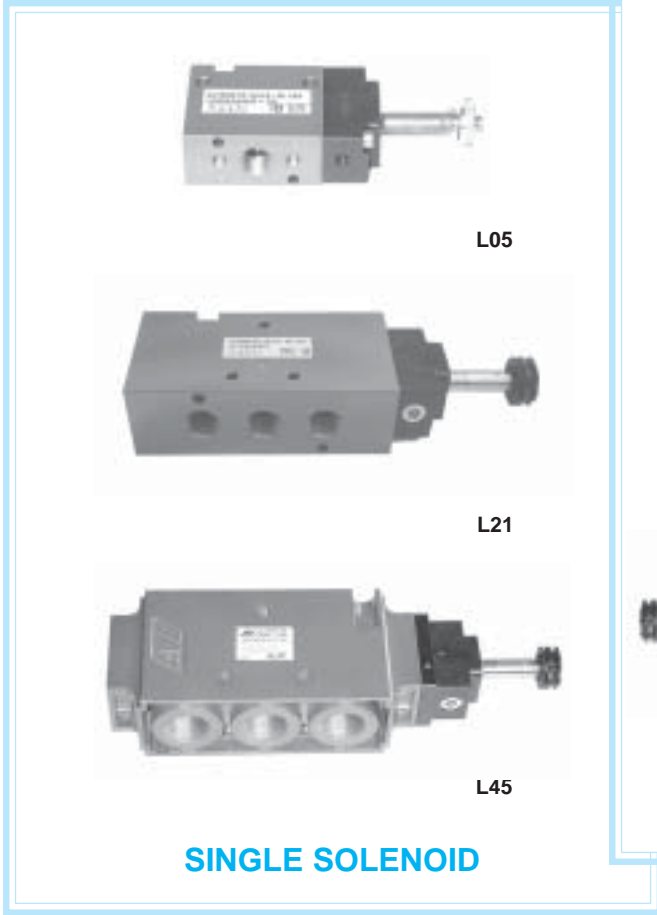
VALVE OPERATION			
		<p>5/3 BLOCK - 4 way 3 position blocked center valves operate like 5/2 double valves except shift when a maintained signal is applied to either 1-2 or 1-4. Valves reset to center position when signal is removed with all ports blocked.</p>	
<p>5/2 SINGLE - 4 way 2 position single operator valves shift, apply pressure from port 1 to 4, and exhaust pressure from port 2 to 3 when a maintained signal is applied to operator 1-4. Valves reset, apply pressure from port 1 to 2, exhaust pressure from port 4 to 5 when the signal is removed.</p>		<p>5/3 EXHAUST - 4 way 3 position exhaust center valves operate like 5/2 double valves except shift when a maintained signal is applied to either 1-2 or 1-4. Valves reset to center position when signal is removed with port 2 open to 3, port 4 open to 5, and port 1 blocked.</p>	
<p>5/2 DOUBLE - 4 way 2 position double operator valves shift, apply pressure from port 1 to 4, and exhaust pressure from 2 to 3 when a momentary signal is applied to operator 1-4. Valves shift, apply pressure from port 1 to 2, and exhaust pressure from 4 to 5 when a momentary signal is applied to operator 1-2.</p>		<p>5/3 PRESSURE - 4 way 3 position pressure center valves operate like 5/2 double valves except shift when a maintained signal is applied to either 1-2 or 1-4. Valves reset to center position when signal is removed with port 1 open to ports 2 and 4, and ports 3 and 5 are blocked.</p>	
OPERATING TEMPERATURES 	SOLENOID PILOT OPERATED	TREATED BUNA-N SEALS (TREATED NBR, Standard L21, L45)	FLUOROELASTOMER SEALS (FPM (FKM) Standard L05 - Option A L21, L45)
	Standard High Temp Coil (Option CT)	-18°C to +52°C (0°F to +125°F) -18°C to +82°C (0°F to +180°F)	-18°C to +52°C (0°F to +125°F) -18°C to +82°C (0°F to +180°F)
OPERATING PRESSURES 	SOLENOID PILOT OPERATED	INLET PORT	EXTERNAL PILOT PORT
	Standard 2 Position - L05 - L21, L45 Standard 3 Position External Pilot (Option B)	345 - 1030 kPa (50 - 150 PSIG) 240 - 1030 kPa (35 - 150 PSIG) 345 - 1030 kPa (50 - 150 PSIG) Vacuum - 240 kPa (Vacuum - 35 PSIG)	Not Required Not Required Not Required 240 - 1030 kPa (35 - 150 PSIG)
FILTRATION AND LUBRICATION 	MEDIA - AIR OR INERT GAS Lubrication of Automatic Valve products is not required but recommended to maximize service life. Oils should be compatible with seal material, have an ISO 32 or lighter viscosity, and have an aniline range of 82°C (180°F) to 99°C (210°F). Refer to Maintenance section of catalog for recommended lubricants. Filter to 50 microns or better. For temperatures below 40°F, air must be dry to prevent formation of ice.		

MODEL NUMBER CHART

SERIES	BODY TYPE	PORT SIZE	FUNCTION	BODY DESIGN	OPERATOR 1	CENTER OPERATOR	OPERATOR 2	VOLTAGE	OPTIONS
L05	0 INLINE	2 1/8	A 4 WAY 2 POSITION	A SINGLE B DOUBLE	A AIR PILOT I PALM BUTTON W WEATHER-PROOF SOLENOID		A AIR PILOT R 2 POSITION SPRING W WEATHER-PROOF SOLENOID	AA 110/50, 120/60 AB 220/50, 240/60, 125VDC	B EXTERNAL PILOT CONNECTION
L21	0 INLINE	3 1/4	A 4 WAY 2 POSITION B 4 WAY 2 POSITION METAL C 4 WAY 3 POSITION BLOCK D 4 WAY 3 POSITION EXHAUST	A SINGLE B DOUBLE	A AIR PILOT F HAND LEVER - LINE G HAND LEVER -MANIFOLD I PALM BUTTON V INTRINSICALLY SAFE W STANDARD SOLENOID	D 3 POSITION SPRING	A AIR PILOT C 3 POSITION SPRING MANUAL M 2 POSITION DETENT MANUAL N 3 POSITION DETENT MANUAL R 2 POSITION SPRING V INTRINSICALLY SAFE W STANDARD SOLENOID	DA 22/50, 24/60, 12VDC DB 24VDC	A FLUROELASTOMER SEALS B EXTERNAL PILOT CONNECTION C CONDUIT COIL CT CONDUIT COIL HIGH TEMP D DUSTPROOF G 18" FLYING LEADS W G THREADS Y EXPLOSION-PROOF COIL Z EXPLOSION-PROOF COIL
L45	0 INLINE	5 1/2 6 3/4	E 4 WAY 3 POSITION PRESSURE						1 PUSH TURN LOCKING OVERRIDE 2 EXTENDED TURN LOCKING OVERRIDE



WEATHER-PROOF AND EXPLOSION-PROOF SOLENOID MODELS

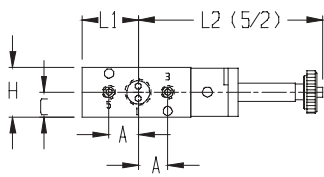
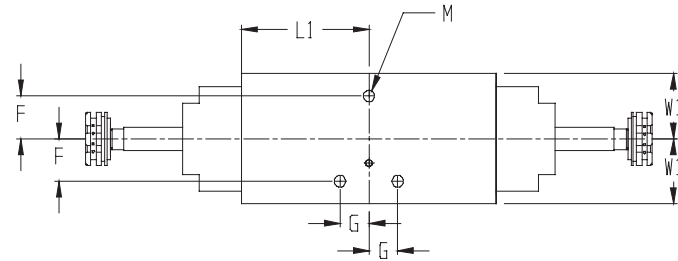
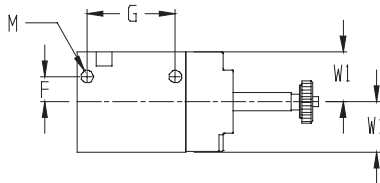
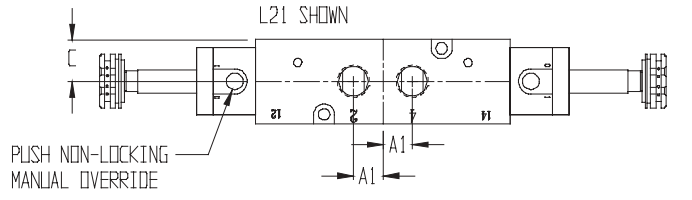
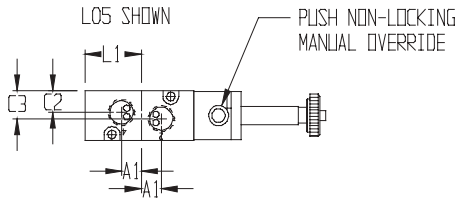
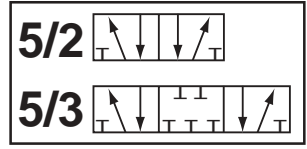


MODEL NUMBERS

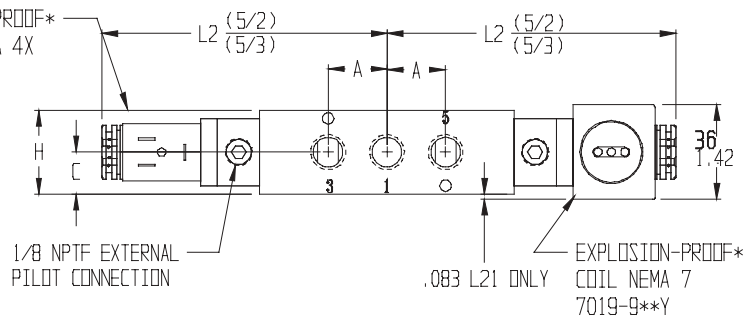
SERIES	PORT SIZE	Cv (l/min)	5/2		5/3			BODY MATERIAL	SEAL MATERIAL	Kg (LB)
			SINGLE	DOUBLE	BLOCK	EXHAUST	PRESSURE			
L05	1/8	0.4 (390)	L0502AAWR*	L0502ABWW*	-	-	-	ALUMINUM	FPM (FKM)	,2 (.4)
L21	1/4	1.8 (1770)	L2103AAWR*	L2103ABWW*	L2103CBWDW*	L2103DBWDW*	L2103EBWDW*	ALUMINUM	NBR	,5 (1.1)
L45	1/2	4.8 (4755)	L4505AAWR*	L4505ABWW*	L4505CBWDW*	L4505DBWDW*	L4505EBWDW*	ALUMINUM	NBR	,7 (1.6)
	3/4	5.2 (5152)	L4506AAWR*	L4506ABWW*	L4506CBWDW*	L4506DBWDW*	L4506EBWDW*			

*Coils sold separately. Refer to Electrical Section for selection.

DIMENSIONAL INFORMATION

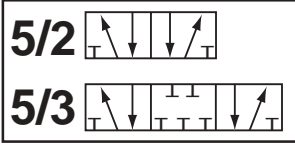


WEATHER-PROOF*
 COIL NEMA 4X
 7019-9**



SERIES	A	A1	C	C2	C3	F	G	H	L1	L2	M	W1
L05	11,1 .44	7,3 .29	9,6 .38	8,3 .38	10,6 .42	9,6 .38	33,2 1.31	19,1 .75	21,3 .84	69,1 2.72	4,5 .18	19,1 .75
L21	22,2 .88	11,1 .44	16,5 .65	-	-	16,1 .64	10,9 .43	31,7 1.25	48,2 1.90	108 4.25	4,4 .17	25,4 1.00
L45	34,5 1.36	34,5 1.36	21 .83	-	-	19 .75	17 .68	42,2 1.66	69 2.72	129 5.07	6,7 .27	31,8 1.25

*Coils sold separately. Refer to Electrical Section for selection.
 Units of Measure: Top - mm, Bottom - inches



AIR PILOT MODELS



L05



L05



L21



L21



L45



L45

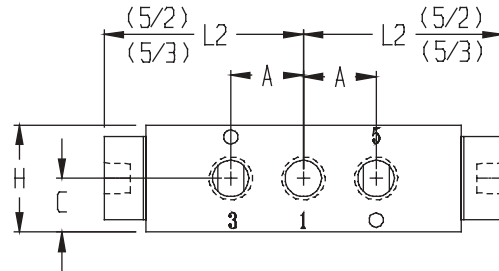
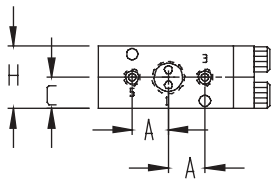
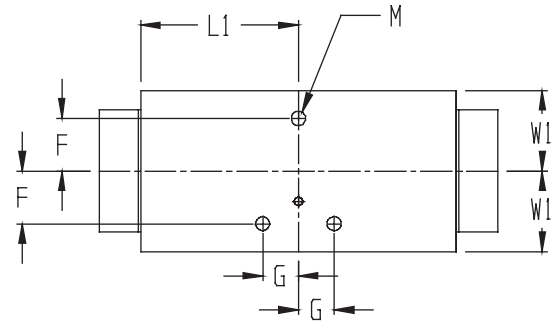
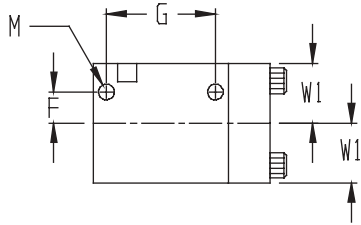
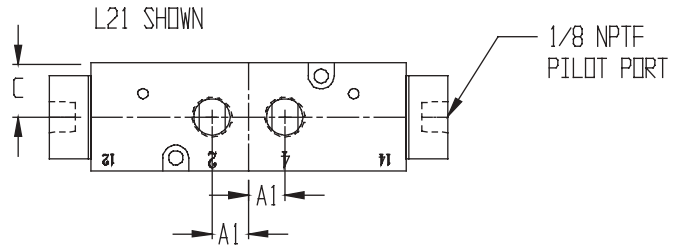
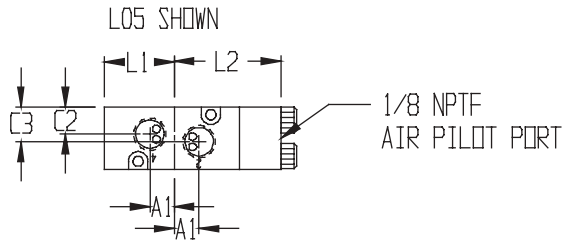
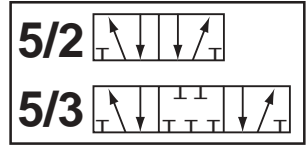
**SINGLE
AIR PILOT**

**DOUBLE
AIR PILOT**

MODEL NUMBERS

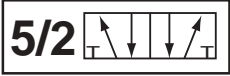
SERIES	PORT SIZE	Cv (l/min)	OPERATOR	5/2		5/3			BODY MATERIAL	SEAL MATERIAL	Kg (LB)
				SINGLE	DOUBLE	BLOCK	EXHAUST	PRESSURE			
L05	1/8	0.4 (390)	AIR PILOT	L0502AAAR	L0502ABAA	-	-	-	ALUMINUM	FPM (FKM)	.2 (.4)
L21	1/4	1.8 (1770)	AIR PILOT	L2103AAAR	L2103ABAA	L2103CBADA	L2103DBADA	L2103EBADA	ALUMINUM	NBR	.5 (1.1)
L45	1/2	4.8 (4755)	AIR PILOT	L4505AAAR	L4505ABAA	L4505CBADA	L4505DBADA	L4505EBADA	ALUMINUM	NBR	.8 (1.7)
	3/4	5.2 (5152)		L4506AAAR	L4506ABAA	L4506CBADA	L4506DBADA	L4506EBADA			

DIMENSIONAL INFORMATION

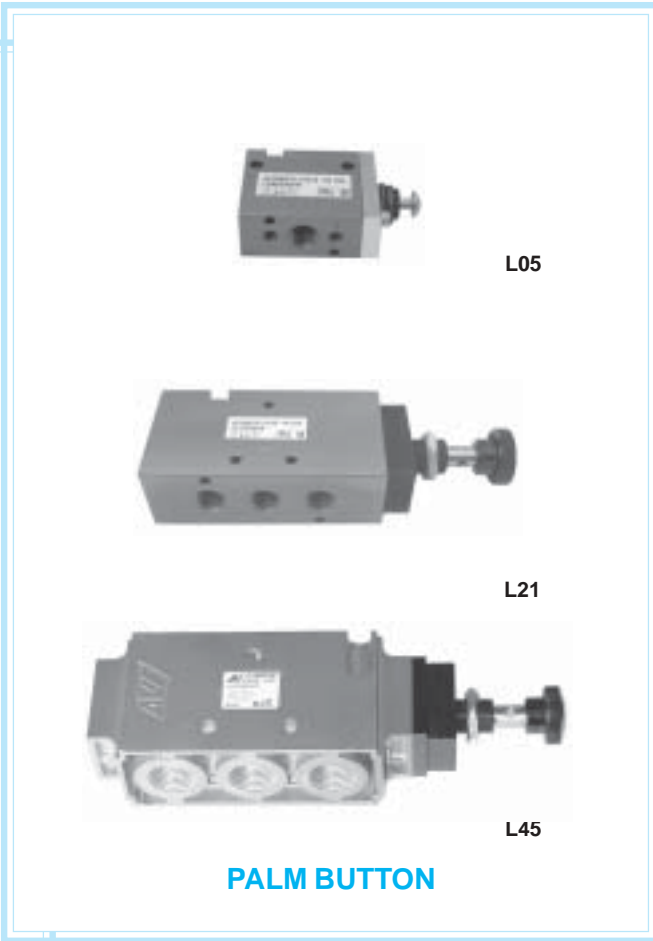
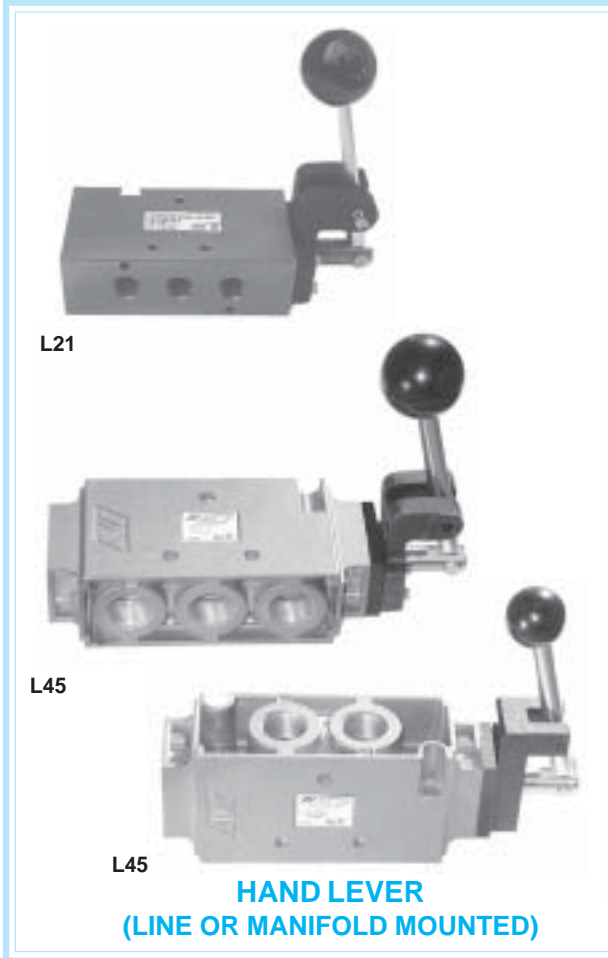


SERIES	A	A1	C	C2	C3	F	G	H	L1	L2	M	W1
L05	11,1 .44	7,3 .29	9,6 .38	8,3 .38	10,6 .42	9,6 .38	33,2 1.31	19,1 .75	21,3 .84	32,5 1.28	4,5 .18	19,1 .75
L21	22,2 .88	11,1 .44	16,5 .65	-	-	16,1 .64	10,9 .43	31,7 1.25	48,2 1.90	61,0 2.40	4,4 .17	24,6 .97
L45	34,5 1.36	34,5 1.36	21 .83	-	-	19 .75	34,5 1.36	84,5 1.66	69,0 2.72	88,9 3.50	6,7 .27	31,8 1.25

Units of Measure: Top - mm, Bottom - inches



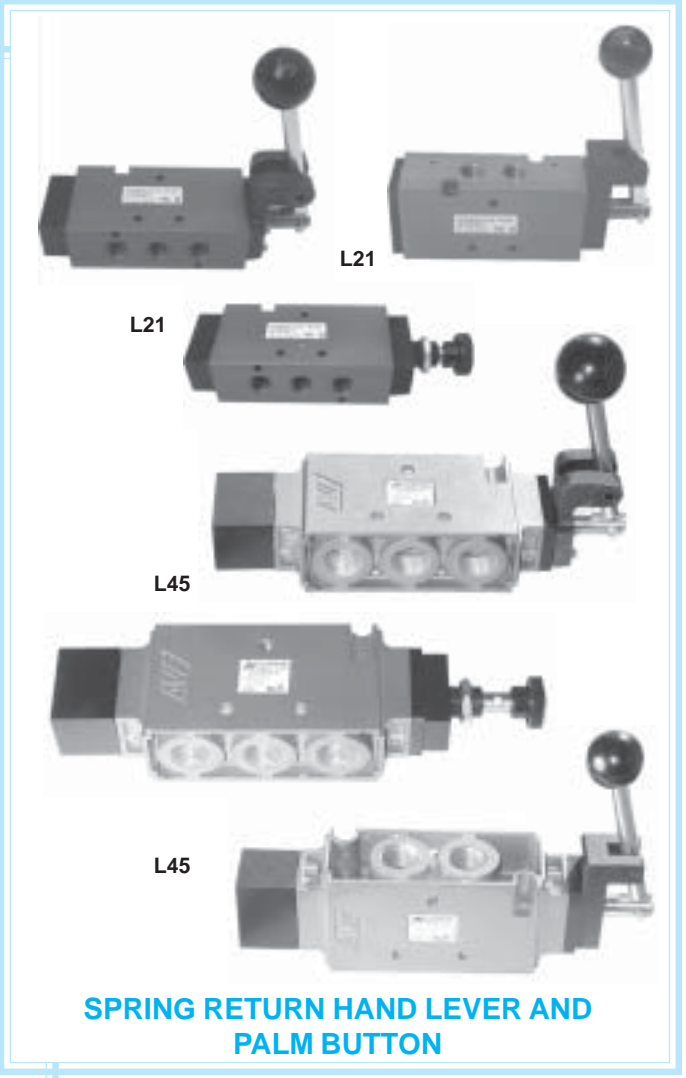
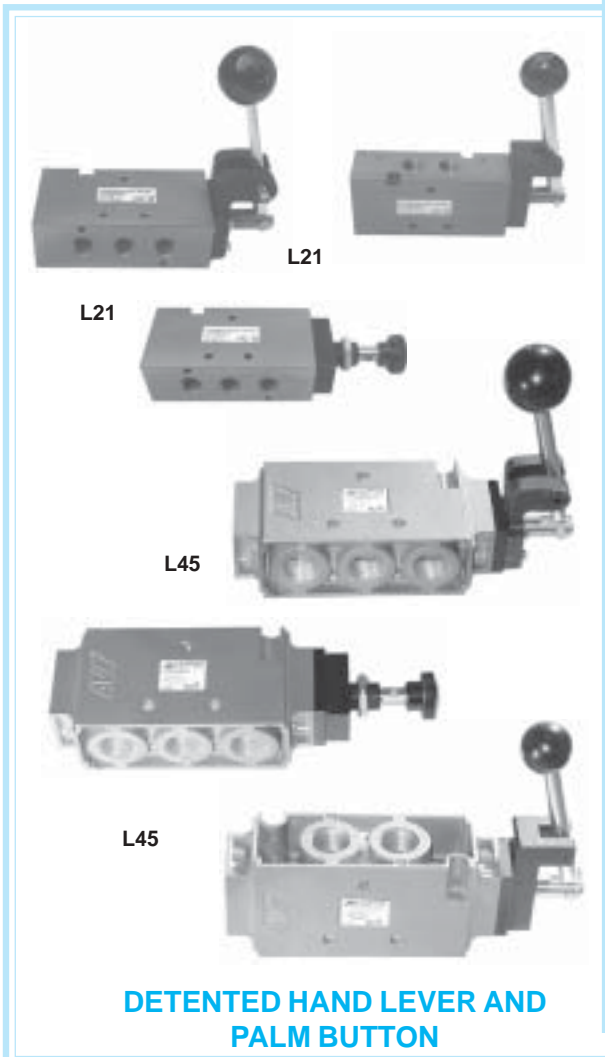
MANUAL MODELS



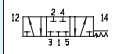


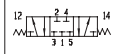


MODEL NUMBERS (4 WAY 2 POSITION)

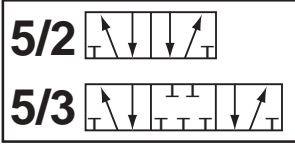
SERIES	PORT SIZE	Cv (l/min)	OPERATOR	5/2		BODY MATERIAL	SEAL MATERIAL	Kg (LB)
				DETENTED	SPRING RETURN			
L05	1/8	0.4 (390)	PALM BUTTON	-	L0502AAIR	ALUMINUM	FPM (FKM)	12 (.4)
L21	1/4	1.8 (1770)	HAND LEVER LINE MOUNTED	L2103BAFM	L2103AAFR	ALUMINUM	NBR	.5 (1.1)
			HAND LEVER MANIFOLD MOUNTED	L2103BAGM	L2103AAGR			
			PALM BUTTON	L2103BAIM	L2103AAIR			
L45	1/2	4.8 (4755)	HAND LEVER LINE MOUNTED	L4505BAFM	L4505BAFR	ALUMINUM	NBR	.96 (2.1)
			HAND LEVER MANIFOLD MOUNTED	L4505BAGM	L4505BAGR			
			PALM BUTTON	L4505BAIM	L4505BAIR			
	3/4	5.2 (5152)	HAND LEVER LINE MOUNTED	L4506BAFM	L4506BAFR			
			HAND LEVER MANIFOLD MOUNTED	L4506BAGM	L4506BAGR			
			PALM BUTTON	L4506BAIM	L4506BAIR			

MANUAL MODELS



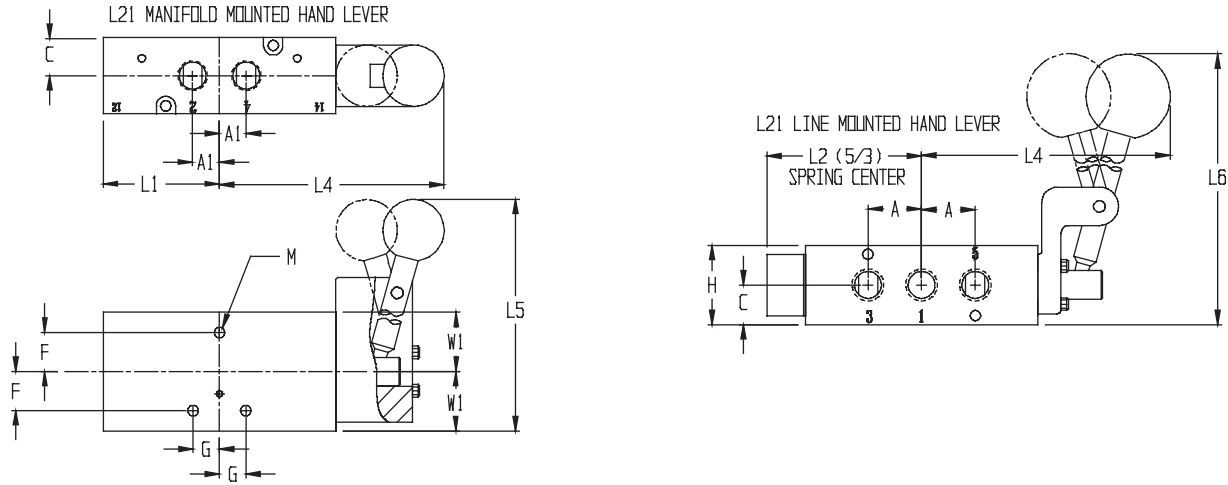
MODEL NUMBERS (4 WAY 3 POSITION)

SERIES	PORT SIZE	Cv (l/min)	OPERATOR	5/3						BODY MATERIAL	SEAL MATERIAL	Kg (LB)
												
				DETENTED 5/3			SPRING RETURN 5/3					
				BLOCK	EXHAUST	PRESSURE	BLOCK	EXHAUST	PRESSURE			
L21	1/4	1.8 (1770)	HAND LEVER LINE MOUNTED	L2103CAFN	L2103DAFN	L2103EAFN	L2103CBFC	L2103DBFC	L2103EBFC	ALUMINUM	NBR	.5 (1.1)
			HAND LEVER MANIFOLD MOUNTED	L2103CAGN	L2103DAGN	L2103EAGN	L2103CBGC	L2103DBGC	L2103EBGC			
			PALM BUTTON	L2103CAIN	L2103DAIN	L2103EAIN	L2103CBIC	L2103DBIC	L2103EBIC			
L45	1/2	4.8 (4755)	HAND LEVER LINE MOUNTED	L4505CAFN	L4505DAFN	L4505EAFN	L4505CBFC	L4505DBFC	L4505EBFC	ALUMINUM	NBR	.96 (2.1)
			HAND LEVER MANIFOLD MOUNTED	L4505CAGN	L4505DAGN	L4505EAGN	L4505CBGC	L4505DBGC	L4505EBGC			
			PALM BUTTON	L4505CAIN	L4505DAIN	L4505EAIN	L4505CBIC	L4505DBIC	L4505EBIC			
	3/4	5.2 (5152)	HAND LEVER LINE MOUNTED	L4506CAFN	L4506DAFN	L4506EAFN	L4506CBFC	L4506DBFC	L4506EBFC			
			HAND LEVER MANIFOLD MOUNTED	L4506CAGN	L4506DAGN	L4506EAGN	L4506CBGC	L4506DBGC	L4506EBGC			
			PALM BUTTON	L4506CAIN	L4506DAIN	L4506EAIN	L4506CBIC	L4506DBIC	L4506EBIC			

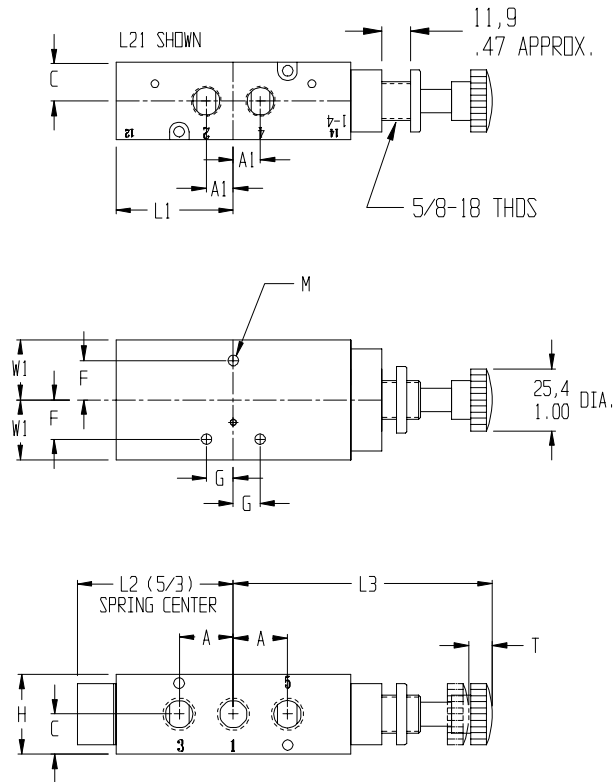


DIMENSIONAL INFORMATION

HAND LEVER



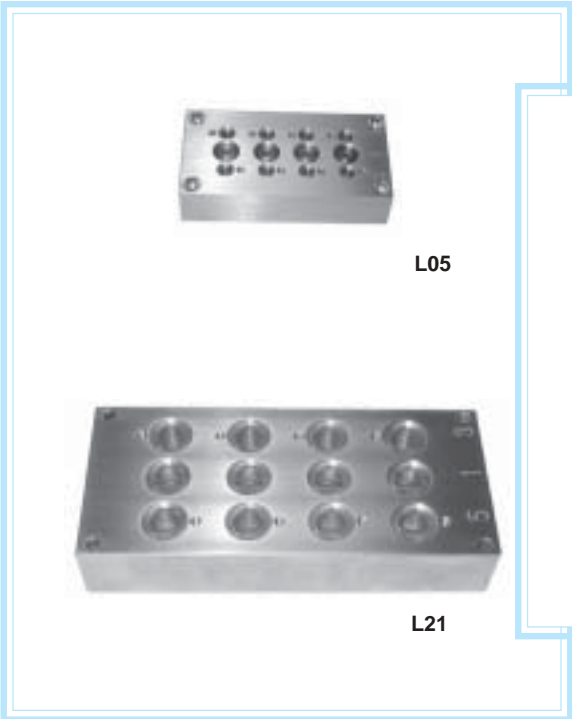
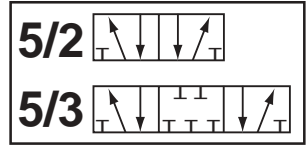
PALM BUTTON



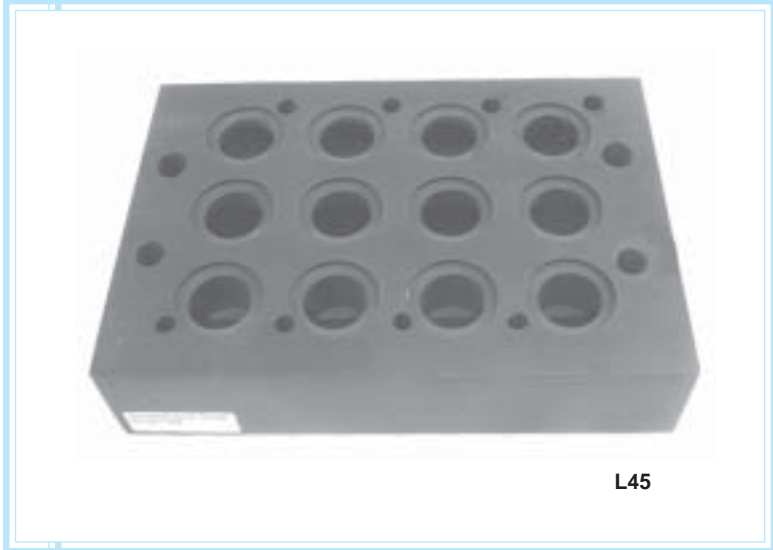
SERIES	A	A1	C	F	G	H	L1	L2	L3	L4	L5	L6	M	W1
L05	11,1 .44	7,3 .29	9,6 .38	9,6 .38	33,2 1.31	19,1 .75	21,3 .84	-	42,2 1.66	-	-	-	4,5 .18	19,1 .75
L21	22,2 .88	11,1 .44	16,5 .65	16,1 .64	10,9 .43	31,7 1.25	48,2 1.90	64,0 2.52	106 4.16	136 5.35	140 5.50	112 4.41	4,4 .17	25,4 1.00
L45	34,5 1.36	34,5 1.36	21 .83	19 .75	17,3 .68	42,2 1.66	69,0 2.72	99,3 3.91	127 5.00	126 4.96	141 5.57	136 5.35	6,7 .27	31,8 1.25

Units of Measure: Top - mm, Bottom - inches

MANIFOLDS



L05



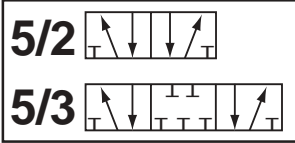
L45

FEATURES

- Common inlet and common exhaust ports.
- Cylinder ports from valve mounted on top of manifold.
- Top mounted valve bodies.
- Seals and mounting hardware included.

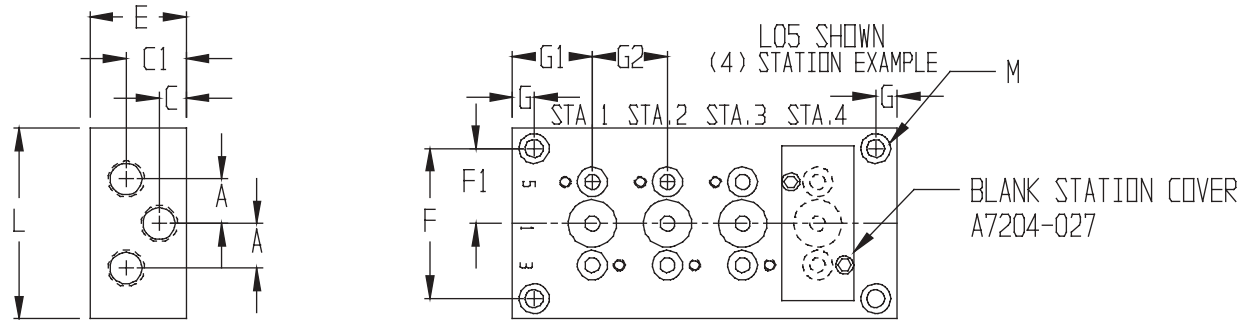
SERIES	MANIFOLD				ACCESSORIES	
	NO. OF STATIONS	MODEL NUMBER	PORTS 3, 1, & 5	WGT Kg (LB)	BLOCKING DISK	BLANK STATION COVER
L05	2	A7204-012	1/8	,2 (.5)	A7204-039	A7204-027
	4	A7204-014		,3 (.7)		
	6	A7204-016		,4 (1.1)		
	8	A7204-018		,6 (1.4)		
	10	A7204-010		,7 (1.7)		
	12	A7204-112		,9 (2.1)		
	14	A7204-114		1,1 (2.5)		
L21	2	A8023-012	3/8	,4 (.9)	A8020-202	A8023-009
	4	A8023-014		,9 (2.0)		
	6	A8023-016		1,3 (3.0)		
	8	A8023-018		1,8 (3.9)		
	10	A8023-010		2,2 (4.9)		
L45 SEE NOTE (I)	2	A7128-232	3/4	1,1 (2.5)	-	A7128-229
	4	A7128-234		1,8 (4.0)		
	6	A7128-236		2,7 (5.9)		
	8	A7128-238		3,3 (7.8)		
	10	A7128-240		4,3 (9.6)		

(I) Previous L45 manifolds (A7127 - ***) are not compatible with new L45.

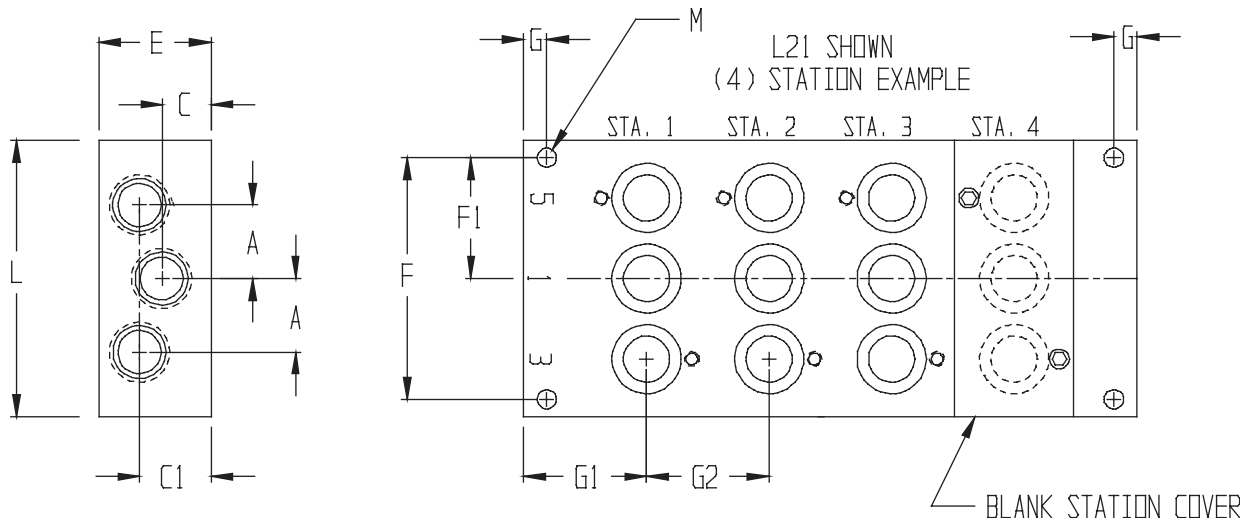


DIMENSIONAL INFORMATION

L05



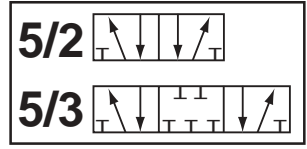
L21, L45



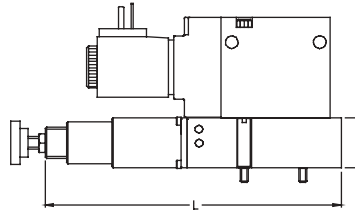
SERIES	A	C	C1	E	F	F1	G	G1	G2	L	M
L05	11,9 .47	7,11 .28	15,8 .62	25,4 1.00	40,1 1.58	20,0 .79	5,8 .23	21,1 .83	19,8 .78	50,8 2.00	4,5 .18
L21	20,3 .80	13,4 .53	19,8 .78	30,9 1.22	66,5 2.62	33,3 1.31	6,4 .25	33,8 1.33	33,8 1.33	76,2 3.00	5,6 .22
L45	34,5 1.36	19,3 .76	30,0 1.18	50,8 2.00	38,1 1.50	19,05 .75	13,9 .55	43,4 1.71	43,4 1.71	117 4.60	8,6 .34

Units of Measure: Top - mm, Bottom - inches

ACCESSORIES



SANDWICH SINGLE PRESSURE REGULATOR

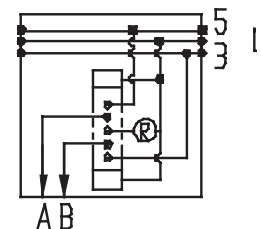


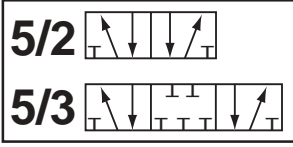
SERIES	MODEL NUMBER	VALVE BODY DESIGN	DIMENSION H	DIMENSION L	WGT Kg (LB)
L05	B7204-028	SINGLE	19,1 .75	112,3 4.42	,09 (.2)
L21	B8023-035	SINGLE	33,0 1.30	136,6 5.38	,3 (.6)
L21	B8023-067	DOUBLE	33,0 1.30	136,6 5.38	,4 (.8)

Units of Measure: Top - mm, Bottom - inches

FEATURES

- Regulates single inlet pressure from inlet port 1 to cylinder ports 2 & 4.
- Mounts between valve and base.
- Pressure range: L05: 345 - 1030 kPa (50 - 150 PSIG)
 L21: 240 - 1030 kPa (35 - 150 PSIG)
 Work port pressure is adjustable from:
 0 - 1030 kPa (0 - 150 PSIG)
- 1/8 NPTF gage port: Available with single valves only.
- Valve and regulator sold together.
- See Accessories Section for in port regulator, PO check and flow control alternatives.





OPTIONS

(LISTED AT THE END OF THE MODEL NUMBER
IN ALPHA-NUMERIC ORDER)

A - FLUOROELASTOMER SEALS (L21 & L45)

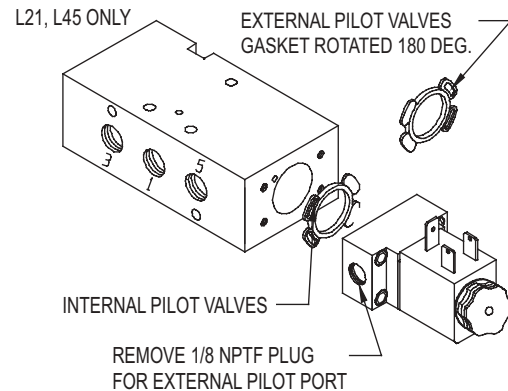
For applications where fluid media or ambient conditions are not compatible with nitrile seals. Note: Fluorocarbon seals do not increase the effective temperature range of a solenoid valve. For high temperature applications, consult the factory.

B - EXTERNAL PILOT

For solenoid applications when the pressure to port is less than 35 PSIG (2 BAR). See example below for field conversion of L21 & L45. The L05 must be ordered as an externally piloted valve, if required.

FIELD CONVERSION FOR L21 & L45

1. Remove solenoid and cap from valve body.
2. Rotate gasket 180 degrees so that the internal pilot hole in the valve body is covered by the gasket.
3. Reassemble the gasket, cap and solenoid to the valve body. Make sure gasket completely covers internal pilot hole before tightening screws.
4. Remove the 1/8 NPTF pipe plug from the cap and make the external pilot connection.



C - CONDUIT COIL

Refer to Electrical Section for details.

CT - CONDUIT COIL HIGH TEMPERATURE

Refer to Electrical Section for details.

D - DUSTPROOF

For applications in extremely dusty and contaminated environments. Standard vent ports are plugged. Operators breathe through the exhaust ports via flats on the end of the spools.

G - COIL WITH 18" LEADS

Refer to Electrical Section for details.

L - LOW WATT COIL

Refer to Electrical Section for details.

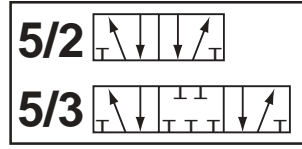
W - G THREADS

Y - EXPLOSION PROOF COIL (CSA, FM)

Refer to Electrical Section for details.

Z - EXPLOSION PROOF COIL (ATEX, PTB)

Refer to Electrical Section for details.



ELECTRICAL INFORMATION

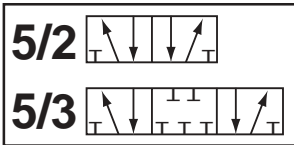
DESCRIPTION	SERIES	WHEN THE 8TH CHARACTER OF MODEL NUMBER IS:	INSTRUCTIONS	COIL PART NUMBER ** = VOLTAGE
NEMA 4X WITH DIN 43650C CONNECTION (L05)	L05	W	Order coil separately (specify voltage code from below)	7144-9**
NEMA 4X WITH 18" LEADS (L05)	L05	W	Order coil separately (specify voltage code from below)	7144-9**G Contact Factory for low wattage Options
INTRINSICALLY-SAFE WITH STRAIN RELIEF (EEx ia IIC T6)	L21 L45	V	Coil included (24VDC only)	A7106-374 (if ordered separately)
NEMA 4X WITH DIN 43650 CONNECTION	L21 L45	W	Order coil separately (specify voltage code from below)	7019-9**
NEMA 4X WITH 18" LEADS	L21 L45	W	Order coil separately (specify voltage code from below)	7019-9**G
NEMA 4X 1/2" CONDUIT WITH 30" LEADS	L21 L45	W	Order coil separately (specify voltage code from below)	7019-9**C 7019-9**CT (high temperature 82°C maximum)
EXPLOSION-PROOF 1/2" CONDUIT WITH 24" LEADS [CSA 202633X FM APPROVED CL. I; ZONE1Ex m II T4; AEx m II CL. I; Div. 1; GR. A, B, C, D CL. II; GR. E, F, G CL. III T4 Ta= -20°C to +60°C NEMA: 4, 4X, 7C, 7D]	L21 L45	W	Order coil separately (specify voltage code from below)	7019-9**Y

For alternative lower wattage, please consult factory.

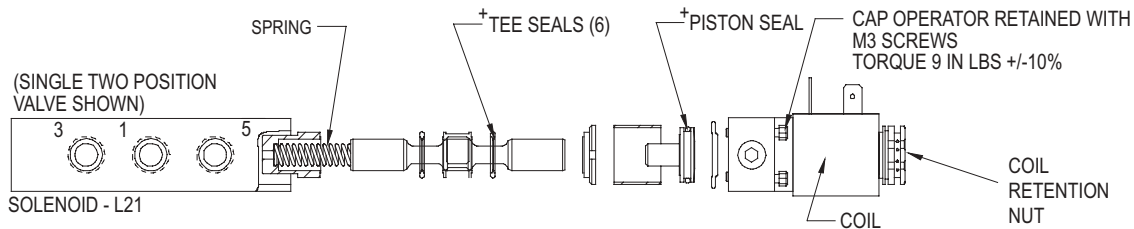
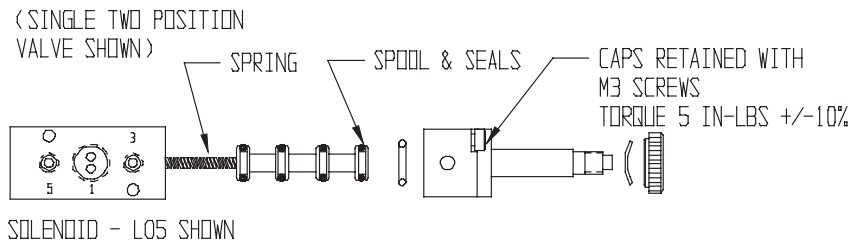
L05 VOLTAGE +/- 10 %	* * C O D E	CURRENT (AMPS)		RESISTANCE (OHMS @ 25° C)	POWER (AC=VA DC=WATTS)	L21, L45 VOLTAGE +/- 10 %	* * C O D E	CURRENT (AMPS)		RESISTANCE (OHMS @ 25° C)	POWER (AC = VA DC = WATTS)				
		INRUSH	HOLDING					INRUSH	HOLDING						
		NEMA						NEMA							
		4	4	4	4			4	7	4	7	4	7		
22/50 24/60	DA	.15	.15	78	2.6	22/50 24/60	DA	.40	.55	.40	.32	31	19	4.8	4.5
110/50 120/60	AA	.02	.02	2890	2.6	110/50 120/60	AA	.08	.096	.06	.054	840	530	4.8	6.5
220/50 240/60	AB	.01	.01	9515	2.6	220/50 240/60	AB	.04	.048	.03	.027	3400	2345	6.0	6.5
12 VDC	DA	.15	.15	78	2.0	12 VDC	DA	.40	-	.40	.375	31	32	4.8	7
24 VDC	DB	.09	.09	283	2.0	24 VDC	DB	.20	-	.20	.187	121	128	4.8	4.5
125 VDC	AB	.01	.01	9515	2.0	125 VDC	AB	.04	-	.04	.06	3400	2000	4.8	7

DIN 43650C L05 CONNECTORS	STRAIN RELIEF WITHOUT CORD		LIGHT + 6' CORD	
TYPE	120/60 AC	24 VDC		
PART NUMBER	7144-001	7144-002	7144-003	

DIN 43650 L21, L45 CONNECTORS	STRAIN RELIEF WITHOUT CORD	1/2" CONDUIT WITHOUT CORD	MOLDED WITH 6' CORD	STRAIN RELIEF WITH LIGHT		STRAIN RELIEF WITH LIGHT + 6' CORD	
TYPE	100-240 AC 48-120 DC	6-48 AC/DC	100-240 AC 48-120 DC	6-48 AC/DC	100-240 AC 48-120 DC	6-48 AC/DC	
PART NUMBER	7020-001	7039-001	7020-006	7020-AA	7020-DB	7094-006	7094-007



SERVICE KIT INFORMATION



SERVICE KIT INSTALLATION

1. Remove Coil retention nut.
2. Remove Coil.
3. Remove screws from cap of operator.
4. Remove cap.
5. Remove existing serviceable components.
6. Replace with kit components. **+All seals must be lubricated with Magnalube-G or equivalent.**
7. Align pilot hole in body with pilot hole in cap.
8. Torque screws as shown above.

+ ANY VALVE REBUILT MUST BE LUBRICATED TO FACTORY SPECIFICATIONS.

Lubrication of Automatic Valve products is not required but is recommended to maximize service life. Oils should be compatible with seal material, have an ISO 32 or lighter viscosity, and have an aniline point between 82°C (180°F) and 99°C (210°F). Refer to Maintenance section of catalog for recommended lubricants.

MODEL NUMBERS

SERIES	FUNCTION			
	SINGLE		DOUBLE	
	PART NUMBER	DESCRIPTION	PART NUMBER	DESCRIPTION
L05	K-L05-SGL	O Rings & Spool Spring (1)	K-L05-DBL	O Rings & Spool
L21	K-L21-SGL	Tee Seals (6)	K-L21-DBL	Tee Seals (6)
	K-L21-SGL-A (Fluoroelastomer)	Piston Seal (1) Spring (1)	K-L21-DBL-A (Fluoroelastomer)	Piston Seal (2)
L45	K-L45-SGL	Tee Seals (6)	K-L45-DBL	Tee Seals (6)
	K-L45-SGL-A (Fluoroelastomer)	Piston Seal (1) Spring (1)	K-L45-DBL-A (Fluoroelastomer)	Piston Seal (2)